

**IMPORTANT: On 1 September 2017, this product (among others) was temporarily suspended while we investigate the results of recent tests (Parts 6 and 7 of British Standard 476). In addition, we have recently identified a compliance issue relating to our calculation and testing of the declared lambda value of products in the 4000 and 5000 ranges and the Crown-Bond and Crown-Fix products within the Crown Flat Roofing range. Materials relating to this product are for information only.**

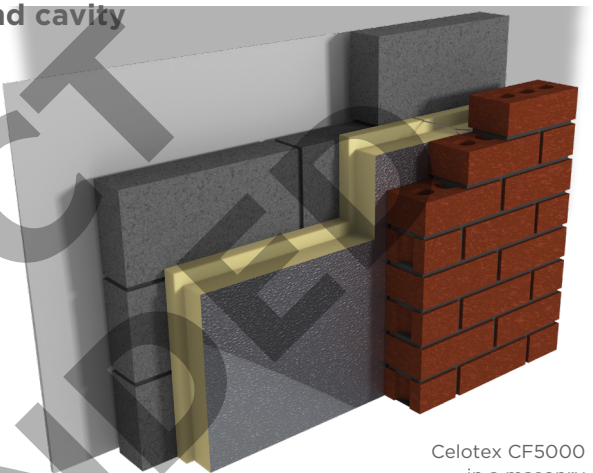
**Celotex CF5000 is our premium performance PIR solution specifically designed for use within full fill cavity wall applications. Celotex is the brand leading manufacturer of PIR insulation boards and CF5000 is the latest addition to the '5000' series and cavity wall range.**

Celotex CF5000 helps you simplify compliance to UK building regulations by achieving a U-value of 0.18 W/m<sup>2</sup>K, maximising thermal performance without widening the cavity.

BBA certified, Celotex CF5000 features a mechanically engineered edge profile, eliminating the passage of moisture and allowing you to focus on achieving enhanced building performance.

With Celotex CF5000 you are specifying an insulation board that:

- Is certified under BBA certificate number 16/5343
- Has a thermal conductivity of 0.021W/mK offering enhanced thermal performance and even better U-values
- Achieves an A+ rating when compared to the BRE Green Guide
- Has class 0 fire performance throughout the entire product
- Makes installation easy with dimensions to fit with standard cavity wall tie spacing
- Is easy to cut with foil facings on either side
- Minimises heat loss through gaps with a mechanically engineered rebated edge



Celotex CF5000  
in a masonry  
wall application

## Applications

Celotex CF5000 is specifically for use within full fill cavity wall applications.

## Specification clause

The insulation shall be Celotex CF5000 97mm thick suitable for 100mm cavities. CF5000 comprises a polyisocyanurate rigid foam insulation core featuring textured aluminium foil facings on both sides and Class 0 fire performance throughout the product in accordance with BS 476. CF5000 is A+ rated when compared to the BRE Green Guide 2008 and is CFC/HCFC free with low GWP and zero ODP and CE marking compliance to BS EN 13165. CF5000 has been mechanically engineered with a rebated edge, tightly interlocking during installation to resist the passage of moisture across the cavity. CF5000 is manufactured in accordance with quality management systems ISO 9001 and environmental management system ISO 14001. All products must be installed in accordance with instructions issued by Celotex.

## Technical data

Thickness (mm)	R-value (m <sup>2</sup> K/W)	Weight (kg/m <sup>2</sup> )
97	4.60	3.25

## Physical properties

	Method	CF5000
<b>Compressive strength</b>	BS EN 826	≥120kPa
<b>Dimensional stability</b>	BS EN 1604	DS (70, 90)3, DS (-20,-)1
<b>Water vapour resistance</b>	BS EN 12086: Method B	>150 MNs/g
<b>Thermal conductivity</b>	BS EN 12667	0.021 W/mK
<b>Fire propagation</b>	BS 476: Part 6	Pass
<b>Surface spread of flame</b>	BS 476: Part 7	Class 1

**Board size (mm) : 1200 x 450**

## Typical U-values

Build up 1	Dense (1.13 W/mK)	Medium dense (0.59 W/mK)	Lightweight concrete (0.25 W/mK)	Aircrete (0.15 W/mK)
CF5097	0.19	0.19	0.18	0.18

Build up 1: Brickwork outer leaf / Celotex CF5000 / Blockwork inner leaf / Plasterboard on dabs + 3mm skim

Build up 2	Dense (1.13 W/mK)	Medium dense (0.59 W/mK)	Lightweight concrete (0.25 W/mK)	Aircrete (0.15 W/mK)
CF5097	0.19	0.19	0.18	0.18

Build up 2: Render / Blockwork outer leaf / Celotex CF5000 / Blockwork inner leaf / Plasterboard on dabs + 3mm skim

These are example calculations using the structural framework above. U-values will vary depending on application. To calculate a specific U-value, please visit our online U-value calculator at [celotex.co.uk](http://celotex.co.uk)

### Sustainable insulation

Celotex PIR insulation has been independently assessed by BRE Global and has been accredited with an A+ rating when compared to the BRE Green Guide. The results also show that Celotex offers a lower environmental impact than other typical PIR manufacturers.

For further information about Celotex' sustainable insulation solutions, visit the sustainability pages of the website at [celotex.co.uk](http://celotex.co.uk)

### A bit about us

Celotex products protect countless buildings the length and breadth of the UK. Providing PIR insulation for over 90 years, our solutions and product development continue to make a difference not just by creating warmth and comfort but by saving energy too. Every day, thousands of professionals choose Celotex. For them, Celotex is insulation. Plus, all Celotex products come with a suite of practical online tools, as well as exceptional personal support and aftercare.

#### Installation guidelines

For Celotex CF5000 installation details please refer to our online 'applications' pages.

#### Further information

If you wish to contact Celotex, please do so through the 'contact us' page on our website.

For information regarding storage, installation and handling of Celotex products, or for health & safety advice, please refer to our online 'literature' pages.

Celotex has a policy of continuous product development and reserves the right to alter product designs or specifications without prior notice.

Saint-Gobain Construction Products UK Limited trading as Celotex. Registered Office: Saint-Gobain House, Binley Business Park, Coventry CV3 2TT. Registered in England and Wales No 734396