

**IMPORTANT: On 23 June 2017, in view of the focus on components of rainscreen cladding systems, Celotex stopped the supply of Celotex RS5000, pending further clarity. Material about the product is for information only. Celotex do not currently supply a solution for buildings over 18 metres.**

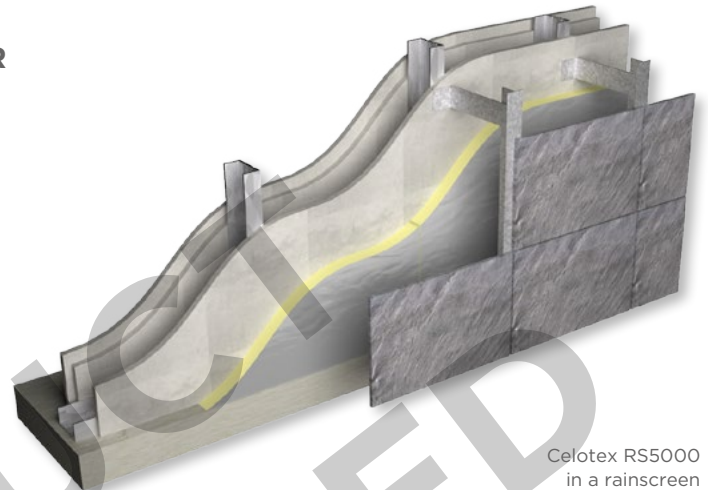
**Celotex RS5000 is our premium performance PIR solution for use in rainscreen cladding systems.**

Developed specifically to enhance the thermal performance of external facade constructions, RS5000 represents an ongoing commitment to product innovation and is the first PIR insulation board to meet the performance criteria in BR 135 for insulated rainscreen cladding systems and therefore can be considered for use in buildings above 18 metres in height.

Featuring a premium lambda performance of 0.021 W/mK and textured aluminium foil facings, Celotex RS5000 offers enhanced thermal performance, an A+ rating when compared to the BRE Green Guide and Class 0 fire performance.

With Celotex RS5000 you are specifying an insulation board that:

- Features a super low lambda value of 0.021W/mK offering enhanced thermal performance
- Is the first PIR insulation board to successfully test to BS 8414-2:2005, meet the criteria set out in BR 135 and therefore can be considered for use in buildings above 18 metres in height
- Has Class 0 fire performance throughout the entire product in accordance with BS 476
- Achieves an A+ rating when compared to the BRE Green Guide
- Is supported by LABC approval



Celotex RS5000 in a rainscreen cladding application

## Applications

Celotex RS5000 is specifically designed for use in rainscreen cladding systems for both new build and refurbishment projects.

## Specification clause

The rainscreen cladding insulation shall be Celotex RS5000 \_\_\_\_mm thick, comprising a polyisocyanurate (PIR) rigid foam insulation core featuring super low emissivity textured aluminium foil facings on both sides and Class 0 fire performance throughout the product in accordance with BS 476. RS5000 has been successfully tested to BS8414-2 and meets the performance criteria of BR135. RS5000 is A+ rated when compared to the BRE Green Guide and is CFC/HCFC free with low GWP and zero ODP. RS5000 is manufactured in accordance with quality management systems ISO 9001 and environmental management system ISO 14001. All products must be installed in accordance with instructions issued by Celotex.

## Technical data

Thickness (mm)	R-value (m <sup>2</sup> K/W)	Weight (kg/m <sup>2</sup> )
50	2.35	1.81
60	2.85	2.16
70	3.30	2.48
75	3.55	2.64
80	3.80	2.80
90	4.25	3.12
100	4.75	3.38
120	5.70	4.02
150	7.10	4.98

## Physical properties

	Method	RS5000
<b>Compressive strength</b>	BS EN 826	≥120kPa
<b>Dimensional stability</b>	BS EN 1604	DS(70,90)3, DS(-20,-)1
<b>Water vapour resistance</b>	BS EN 12086	>150 MNs/g
<b>Thermal conductivity</b>	BS EN 12667	0.021 W/mK
<b>Fire propagation</b>	BS 476: Part 6	Pass
<b>Surface spread of flame</b>	BS 476: Part 7	Class 1

## Certification

Celotex RS5000 is a premium performance solution and is the first PIR board to successfully meet the performance criteria set out in BR 135 for rainscreen cladding systems.

The system tested was as follows:

- 12mm Fibre Cement Panels
- Supporting aluminium brackets and vertical rails
- 100mm Celotex RS5000
- 12mm Non-combustible sheathing board
- 100mm SFS System
- 2 x 12.5mm plasterboard

The fire performance and classification report issued only relates to the components detailed above. Any changes to the components listed will need to be considered by the building designer.

## Sustainable insulation

Celotex PIR insulation has been independently assessed by BRE Global and has been accredited with an A+ rating when compared to the BRE Green Guide. The results also show that Celotex offers a lower environmental impact than other typical PIR manufacturers.

For further information about Celotex' sustainable insulation solutions, visit the sustainability pages of the website at [celotex.co.uk](http://celotex.co.uk)

## A bit about us

Celotex products protect countless buildings the length and breadth of the UK. Providing PIR insulation for over 90 years, our solutions and product development continue to make a difference not just by creating warmth and comfort but by saving energy too. Every day, thousands of professionals choose Celotex. For them, Celotex is insulation. Plus, all Celotex products come with a suite of practical online tools, as well as exceptional personal support and aftercare.

### Typical U-values

U-values will vary depending on application. To calculate a specific U-value, please visit our online calculator at [celotex.co.uk](http://celotex.co.uk)

### Installation guidelines

For Celotex RS5000 installation details please refer to our online 'applications' pages.

### Further information

If you wish to contact Celotex, please do so through the 'contact us' page on our website.

For information regarding health & safety, please refer to our online 'resources' pages.

Celotex has a policy of continuous product development and reserves the right to alter product designs or specifications without prior notice.

Saint-Gobain Construction Products UK Limited trading as Celotex. Registered Office: Saint-Gobain House, Binley Business Park, Coventry CV3 2TT. Registered in England and Wales No 734396