



Top up Cavity Walls

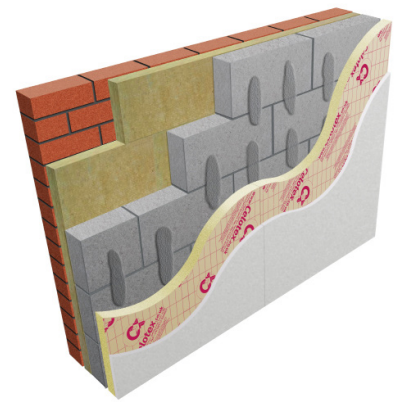
Wall Insulation

Introduction

Celotex is the brand leading manufacturer of PIR insulation boards, with its range encompassing the thinnest and thickest boards available to the construction industry today. All of the Company's products are manufactured at its plant in Suffolk, from where the dedicated Celotex Technical Centre offers advice and calculations to assist in achieving compliance with current regulations and legislation.

Use **Celotex PL3000** thermal laminate as a top up grade to existing cavity walls to deliver the following benefits:

- Assists in upgrading existing walls to current Building Regulation compliance levels
- Suitable for multiple installation techniques
- Provides a vapour control layer when board joints are taped and jointed
- Can be used to provide reliable long term energy savings for buildings
- Tapered edge plasterboard offers the installer maximum installation flexibility and speed



Celotex PL3000

Celotex PL3000 Technical Data

Product Code	Thickness (mm)	Combined R-value (m ² K/W)	Weight (kg/m ²)
PL3015	15 + 12.5	0.70	8.78
PL3025	25 + 12.5	1.15	9.06
PL3040	40 + 12.5	1.80	9.52
PL3050	50 + 12.5	2.20	9.86
PL3060	60 + 12.5	2.65	10.15
PL3065	65 + 12.5	2.85	10.30

Sustainable Insulation

Celotex PIR insulation has been independently assessed by BRE Global and has been accredited with an A+ rating when compared to the BRE Green Guide.

For further information about Celotex' sustainable insulation solutions, visit the sustainability pages of the website at celotex.co.uk

cont...



Example U-value Calculation: Top up Cavity Walls

Construction		50mm clear cavity	50mm cavity filled with mineral wool
Outside surface resistance		-	-
Brickwork		-	-
Cavity		-	-
Blockwork dense		100	100
Plaster dabs cavity		15	15
Variable layer		See below	See below
Board joints sealed to form VCL		-	-
Variable Layer	Thickness (mm)	U-value (W/m ² K)	U-value (W/m ² K)
Celotex PL3000	15 + 12.5	-	-
Celotex PL3000	25 + 12.5	-	0.34
Celotex PL3000	40 + 12.5	-	0.28
Celotex PL3000	50 + 12.5	-	0.25
Celotex PL3000	60 + 12.5	0.30	0.22
Celotex PL3000	65 + 12.5	0.28	0.21

Installation Guidelines for Celotex PL3000

Installation guidelines for internal lining systems using dot and dab

- Ensure that existing walls are permeable. Strip any gloss paint or vinyl wallpaper.
- Use the Celotex Insulation Saw to cut the 1200mm x 2400mm Celotex PL3000 boards to fit the floor-to-ceiling height of the room.
- Ensure a continuous seal at skirting, ceiling level and at openings by applying a continuous band of gypsum adhesive. Gypsum adhesive at perimeter edges can be replaced with thin timber battens.
- Apply further dabs of gypsum adhesive. This should be in accordance with the adhesive manufacturer's instructions.
- Align sheets against the dabs and secure into correct position.
- Once the dabs are set, it is recommended that additional secondary fixings be applied to the Celotex PL3000. Exact fixing details should be in accordance with the recommendations of the fixing manufacturer.
- Joints between the boards must be tightly butted, taped and jointed using appropriate tape and jointing material to create the vapour control layer (VCL).
- Line window and door reveals with thinner Celotex PL3000 boards to reduce the risk of thermal bridging. Fix a batten around the edge of the opening and scribe the board to fit the reveal. Cut the dry lining to suit and mechanically fix into the masonry reveal using proprietary fixings. Finish using an angle fillet at the frame and an angle bead or scrim tape at external corners.
- Please note that to avoid the load being directly applied to the Celotex PL3000, suitable mechanical fixings should be used for other internal fittings. Advice on suitable fixings should be sought directly from the fixing manufacturer.

cont...



Top up Cavity Walls

Wall Insulation

Celotex
SAINT-GOBAIN

Installation guidelines for internal lining systems using mechanical fixings

- Ensure that existing walls are permeable. Strip any gloss paint or vinyl wallpaper.
- Use the Celotex Insulation Saw to cut the 1200mm x 2400mm Celotex PL3000 boards to fit the floor-to-ceiling height of the room.
- Secure Celotex PL3000 with suitable mechanical fixings. Fixing details should be in accordance with the fixing manufacturer's instructions.
- Joints between the boards must be tightly butted, taped and jointed using appropriate tape and jointing material to create the vapour control layer (VCL).
- Line window and door reveals with thinner Celotex PL3000 boards to reduce the risk of thermal bridging. Fix a batten around the edge of the opening and scribe the board to fit the reveal. Cut the dry lining to suit and mechanically fix into the masonry reveal using proprietary fixings. Finish using an angle fillet at the frame and an angle bead or scrim tape at external corners.

Installation guidelines for internal lining systems using mechanical fixings to timber battens

- Ensure that existing walls are permeable. Strip any gloss paint or vinyl wallpaper.
- Fix treated softwood timber battens to the masonry. They should be set out a maximum of 600mm vertical centres to coincide with the edges of the boards. As a minimum requirement, horizontal battens should be used to support the top and bottom of the board edges.
- Secure Celotex PL3000 with suitable mechanical fixings. Fixing details should be in accordance with the fixing manufacturer's instructions.
- Joints between the boards should be tightly butted and finished by taping and jointing using appropriate tape and jointing material to create the VCL.

Installation guidelines for internal lining systems using mechanical fixings to metal lining systems

- Celotex PL3000 boards can be fixed to a number of proprietary metal frame lining systems. The system should be fixed in accordance with the manufacturer's instructions.

Further Information

If you wish to contact Celotex, please visit celotex.co.uk and click on the 'contact us' page.

For information regarding [storage, installation and handling](#) of Celotex products, or for [Health and Safety](#) advice, please refer to the 'literature' pages of the website at celotex.co.uk

Celotex has a policy of continuous product development and reserves the right to alter product designs or specifications without prior notice.